

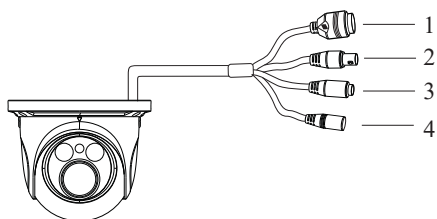
NCT-4M-E31AF Eyeball Camera Quick Start Guide

1.Package

After you receive your device, please check the following accessories.
The pictures here are for reference only.

Camera	Quick Start Guide	CD	Drill Template	Screws & Spiles	Screwdriver	Water-proof Cap

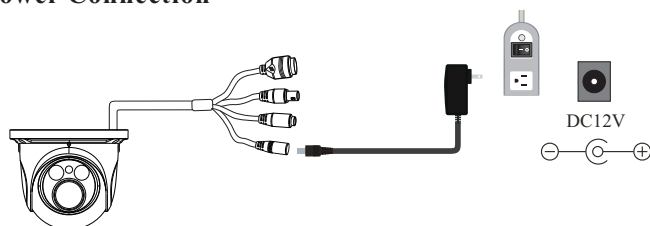
2.Overview



1	Network Cable	3	MIC IN Cable
2	CVBS Cable	4	Power Cable

1

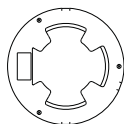
► Power Connection



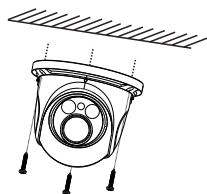
3. Installation

Please make sure that the wall or ceiling is strong enough to withstand 3 times the weight of the camera.

① Attach the drill template to the place where you want to fix the camera and then drill 3 screw holes and 1 cable hole (if you want to route the cables through the mounting base) according to the drill template.

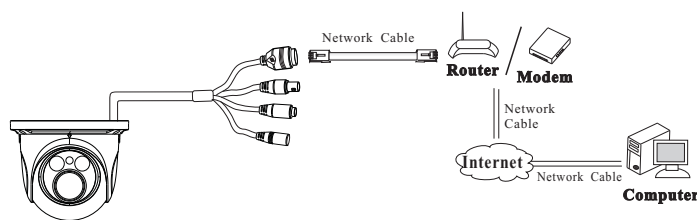


② Route the cables and connect the power cable and network cable. And then secure the camera to the ceiling or wall with the screws.

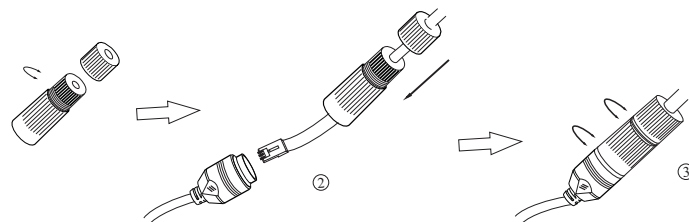


3

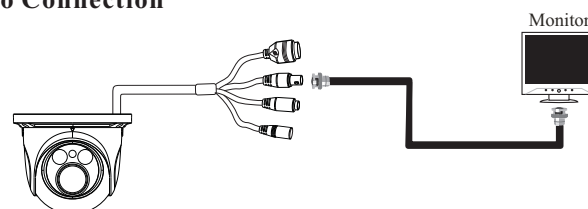
► Network Cable Connection



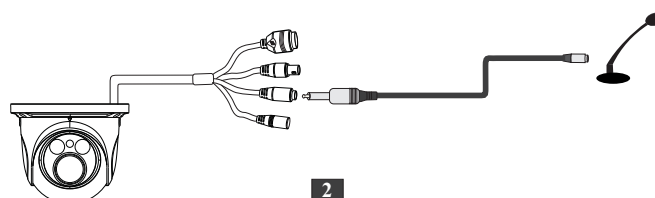
► Water-proof Cap Mounting



► Video Connection

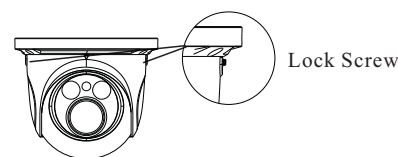


► Audio Connection

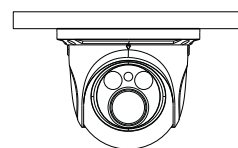


2

③ Adjust the camera to obtain an optimum angle by loosening the lock screws. Before adjustment, preview the image of the camera on a monitor. Tighten the lock screws after you finish adjusting the view angle of the camera.



④ Remove the protection film gently to finish the installation.



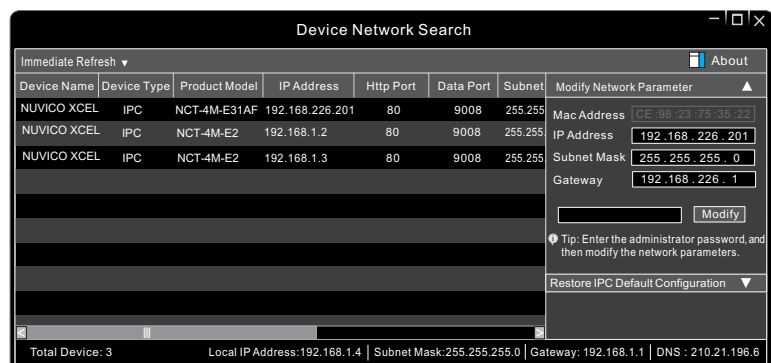
4

4. IE Network Connections

Here we take accessing IP camera via LAN for example. In LAN, there are two ways to access. 1. Access through Xcel IP Utility; 2. Directly Access through IE Browser

► Access the camera through Xcel IP Utility

- ① Make sure that the camera and the PC are well connected to the LAN.
- ② Find the Xcel IP Utility from the CD and then install it in the computer. After that, run the Xcel IP Utility as shown below.

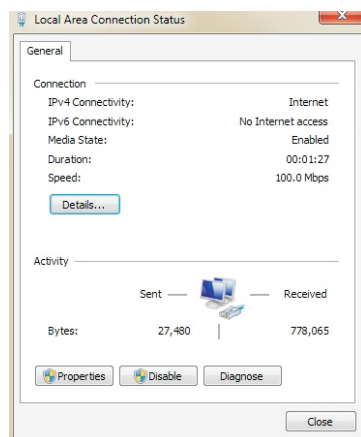


- ③ Modify the IP address. The default IP address of this camera is 192.168.226.201. Click the information of the camera listed in the above table to show the network information on the right hand. Modify the IP address and gateway of the camera and make sure its network address is in the same local network segment as the computer's. Please modify the IP address of your device according to the practical situation.

5

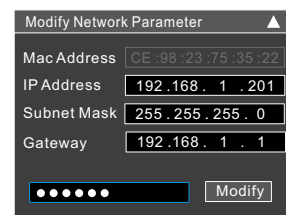
You may use the above default settings when you log in the camera for the first time.

- ① Set the IP address of the PC and make sure the network segment is the same as the default settings of the IP camera. Open the network and share center. Click “Local Area Connection” to pop up the following window.



Select “Properties” and then select Internet protocol according to the actual situation (for example: IPv4). Next, click “Properties” button to set the network of the PC.

7



For example, the IP address of your computer is 192.168.1.4. So the IP address of the camera shall be changed to 192.168.1.X.

After modification, please input the password of the administrator and click “Modify” button to modify the setting.

⚠ The default password of the administrator is **123456**.

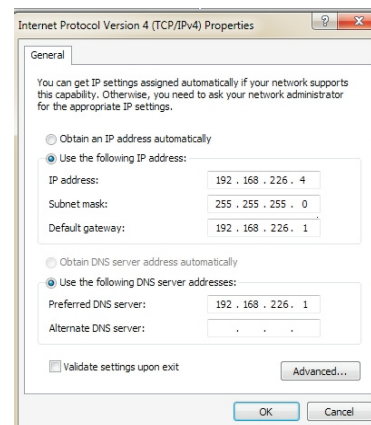
- ④ Double-click the IP address and then the system will pop up the IE browser to connect IP-CAM. IE browser will automatically download the Active X control. After downloading, a login window will pop up. Input the user name and password to login.

⚠ The default user name is **admin**; the default password is **123456**.

► Directly Access Through IE

The default network settings are as shown below: IP address: 192.168.226.201 HTTP: 80
Subnet Mask: 255.255.255.0 Data Port: 9008
Gateway: 192.168.226.1

6



- ② Open the IE Browser and input the default address of the IP camera and select ok. The IE browser will download Active X control automatically.
- ③ After downloading Active X control, the login dialog box will pop up.
- ④ Input the default username and password and then enter to view.

8