

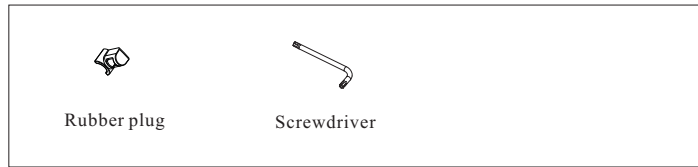
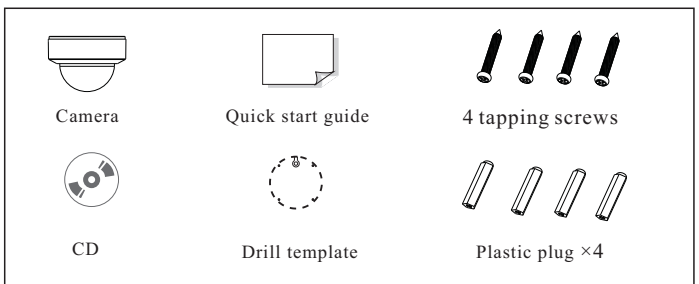
NCT-8ML-OV21AF Vandal Dome Camera Quick Start Guide

- Please read these instructions carefully before using the product and keep it for further reference.
- All the examples and pictures used here are for reference only.
- The contents of this manual are subject to change without notice.

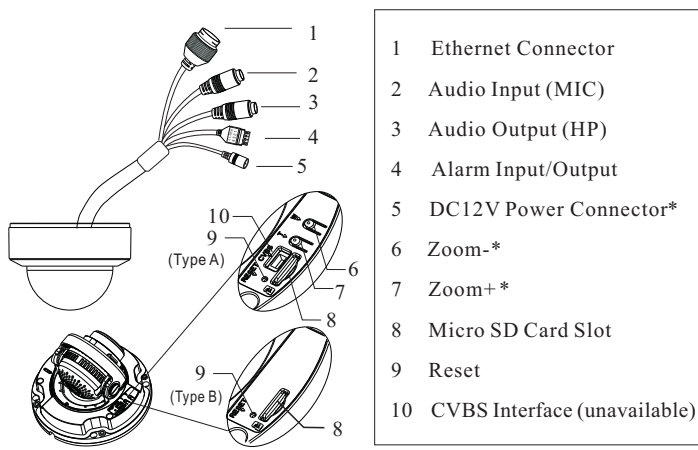
1 Warning and Caution

- If the product does not work properly, please contact your dealer or the nearest service center. Never attempt to disassemble the camera yourself. (We shall not be responsible for any problems caused by unauthorized repair or maintenance.)
- Do not allow water or liquid intrusion into the camera.
- In the use of the product, you must be in strict compliance with the electrical safety regulations of the nation and region. When the product is mounted on wall or ceiling, the device shall be firmly fixed.
- Do not use camera beyond specified voltage range.
- Do not drop the camera or subject it to physical shock.
- Avoid touching the camera lens.
- If cleaning is necessary, please use clean cloth to wipe it gently.
- Do not aim the camera at the sun or extra bright place.
- Do not place the camera in extremely hot, cold (the operating temperature shall be -22°F~144°F), dusty or damp locations, and do not expose it to high electromagnetic radiation.
- To avoid heat accumulation, good ventilation is required for operating environment.

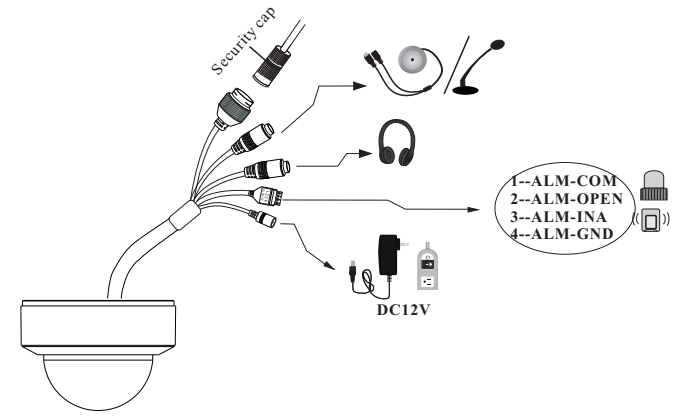
2 Package



3 Overview

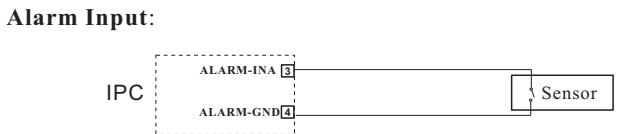


* Only some models support T/W button. If your camera doesn't have these two buttons, please skip 6 and 7.

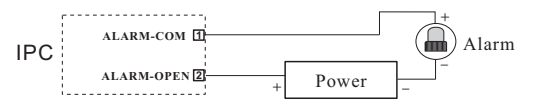


* If the PoE switch is used to power the camera, DC12V power supply is not required.
* It is recommended to install the security cap for outdoor installation.

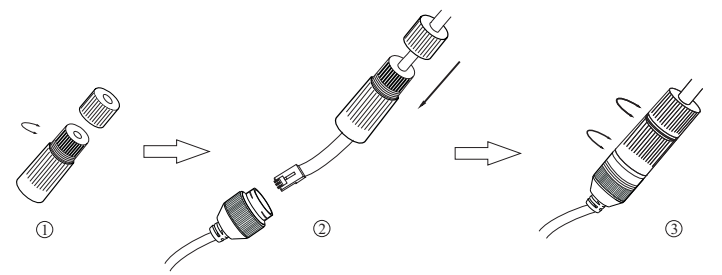
▶ Connecting Alarm Input/Output



Alarm Output:



▶ Connecting Network Cable



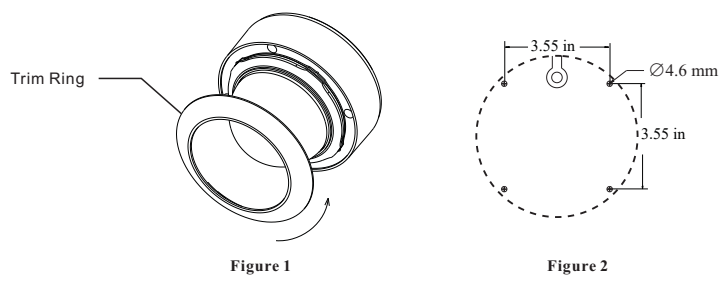
- ① Loosen the nut from the main element.
- ② Run the network cable (without RJ 45 connector) through both elements. Then crimp the cable with RJ 45 connector.
- ③ Connect the cable to the hermetic connector. Then tighten the nut and the main cover.

4 Installation

- * Please make sure that the wall or ceiling is strong enough to withstand 3 times the weight of the camera.
- * Please install the camera in the dry environment. Install the back of the lower dome in less than 4 hours after removing it.
- * Do not remove the protection film until finishing the installation.

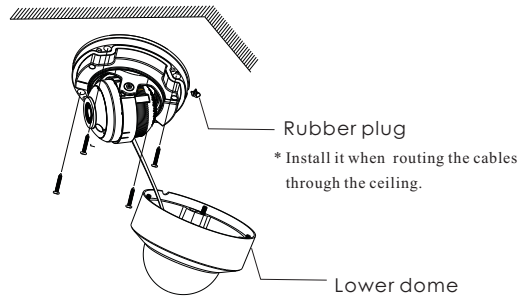
▶ Camera Installation

- ① Rotate the trim ring counter-clockwise to remove it from the camera.
- ② Attach the drill template to the place where you want to fix the camera and then drill 4 screw holes and 1 cable hole (if you want to route the cables through the ceiling) according to the drill template.



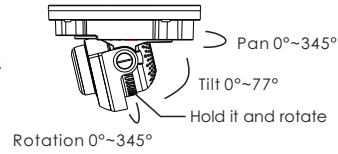
- Loosen the screws to open the lower dome.
- Route and connect the cables. Then secure the camera to the ceiling or wall with the screws provided.

Figure 3



- Three-axis adjustment. Before adjustment, preview the view angle of the camera on a monitor and then adjust the camera according to the figure below to get an optimum angle.

Figure 4



- Insert a micro SD card. Then adjust the image of the camera by pressing T or W button. Before adjustment, view the image of the camera on a monitor.

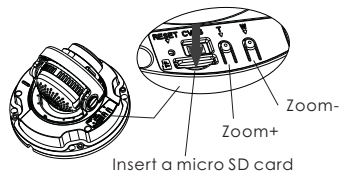


Figure 5

Note: Only some models support T/W button. If your camera doesn't have these two buttons, please skip the above zoom adjustment.

- Install the lower dome back to the camera and fix it with screws. Then put the trim ring onto the lower dome and then rotate it clockwise until it is locked. Finally, remove the protection film softly.

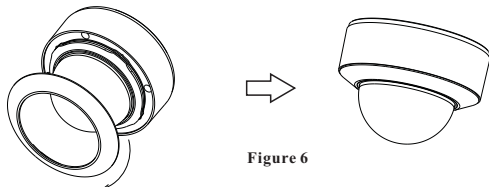
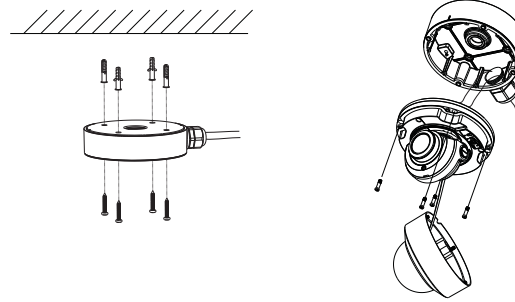


Figure 6

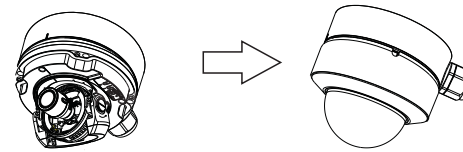
► Install Camera with Junction Box

- Fix the junction box to the wall with screws.
- Rotate the trim ring counter-clockwise to remove it from the camera and then loosen the screws to open the lower dome (See Figure 1 and 3).
- Route and connect these cables (take side conduit cabling for example). Then fasten the camera to the junction box with screws.



- Insert a micro SD card. Then adjust the view of angle and the image (See Figure 4 and 5).

- Install the lower dome back to the camera and fix it with screws. Then put the trim ring onto the lower dome and then rotate it clockwise until it is locked. Finally, remove the protection film softly. (See Figure 6)



Tips

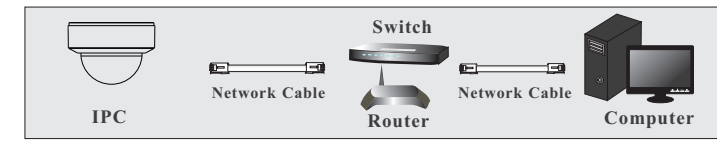
Transparent Dome Maintenance

Transparent dome is an optical element which is made of plastics. As dirt, dust or fingerprints on the dome will reduce the clarity of the image, please keep it clean in the course of installing or using but do not directly touch or wipe it. If there is any dirt or dust, please follow these cleaning tips to clean your dome camera.

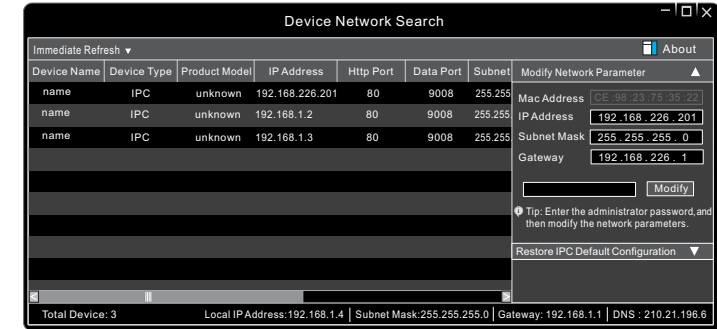
- * If there is dust on the dome, please use a dry soft brush to gently brush it.
- * If there is water or grease on the dome, please gently wipe off the water or grease with a soft cloth. Then use another clean cloth with a little neutral detergent to wipe it several times until it is clean. Finally, dry it with a soft cloth.
- * If there are fingerprints on the dome, please use a clean cotton cloth or lens cleaning wipe with a little neutral detergent to wipe it several times and then dry it with a soft cloth.

5 Network Connection

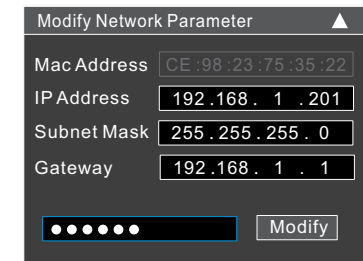
- Access the camera through Xcel IP Utility



- Make sure that the camera and the PC are connected via LAN.
- Find the Xcel IP Utility from the CD and then install it in the computer. After that, run the Xcel IP Utility as shown below.



- Modify the IP address. The default IP address of this camera is 192.168.226.201. Click the information of the camera listed in the above table to show the network information on the right hand. Modify the IP address and gateway of the camera and make sure the network address is in the same local network segment as the computer. Please modify the IP address of your device according to the practical situation.



For example, the IP address of your computer is 192.168.1.4. So the IP address of the camera should be changed to 192.168.1.X. After modification, please enter the password of the administrator and click "Modify" button to modify the settings.

⚠ The default password of the administrator is "123456".

- Double-click the IP address to open up the web browser or you can directly enter the IP address in the address bar of the web browser. Then follow directions to download the plug-in. After that, enter the user name and password in the login interface to login.

⚠ The default username is *admin*; the default password is *123456*.