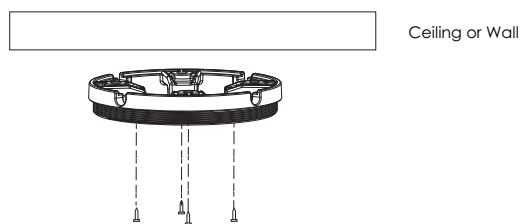
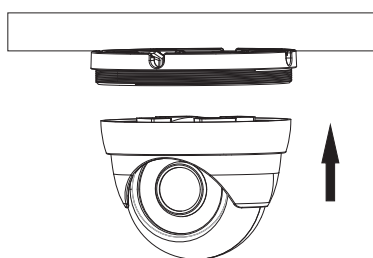




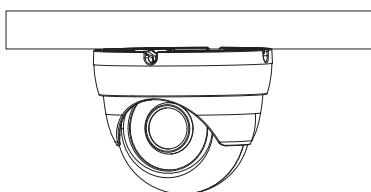
③ Route the cables and connect the cables. And then secure the mounting base to the ceiling or wall with screws.



④ Adjust the camera to obtain an optimum angle. Then secure the camera to the mounting base.



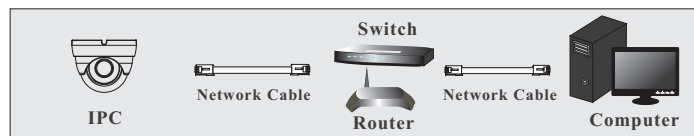
⑤ The installation is complete as shown below.



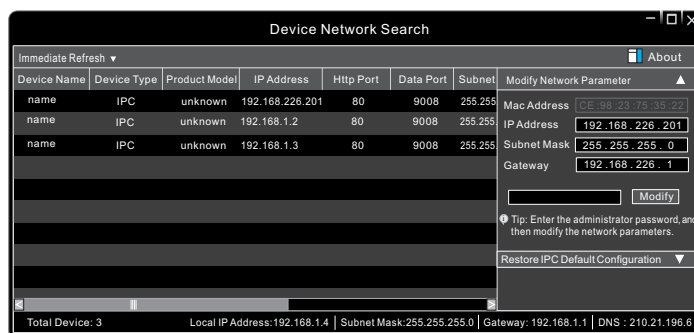
## 5 IE Network Connection

Here we take accessing IP camera via LAN for example. In LAN, there are two ways to access. 1. Access through IP-Tool; 2. Directly Access through IE Browser

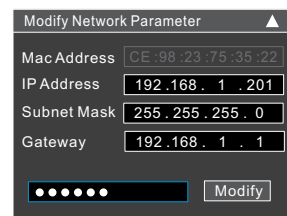
### ● Access the camera through IP-Tool



- ① Make sure that the camera and the PC are well connected via LAN.
- ② Find the IP-Tool from the CD and then install it in the computer. After that, run the IP-Tool as shown below.



③ Modify the IP address. The default IP address of this camera is 192.168.226.201. Click the information of the camera listed in the above table to show the network information on the right hand. Modify the IP address and gateway of the camera and make sure its network address is in the same local network segment as that of the computer. Please modify the IP address of your device according to the practical situation.



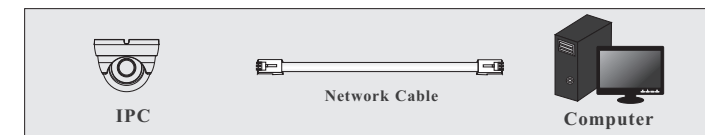
For example, the IP address of your computer is 192.168.1.4. So the IP address of the camera shall be changed to 192.168.1.X. After modification, please input the password of the administrator and click “Modify” button to modify the setting.

⚠ The default password of the administrator is “123456”.

④ Double-click the IP address and then the system will pop up the IE browser to connect IP-CAM. After downloading Active X control, a login window will pop up. Input the user name and password to login.

⚠ The default username is *admin*; the default password is *123456*.

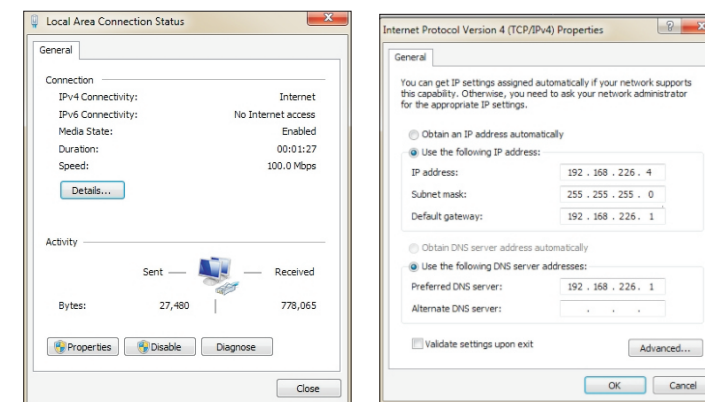
### ● Directly Access Through IE



The default network settings are as shown below:  
 IP address: 192.168.226.201      HTTP:80  
 Subnet Mask: 255.255.255.0      Data Port:9008  
 Gateway: 192.168.226.1

You may use the above default settings when you log in the camera for the first time.

① Set the IP address of the PC and make sure the network segment should be as the same as the default settings of IP-CAM. Open the network and share center. Click “Local Area Connection” to pop up the following window. Select “Properties” and then select Internet protocol according to the actual situation (for example: IPv4). Next, click “Properties” button to set the network of the PC.



② Open the IE browser and input the default address of IP-CAM and confirm. The IE browser will download Active X control automatically.

③ After downloading Active X control, the login dialog box will pop up.

④ Input the default username and password and then enter to view.